

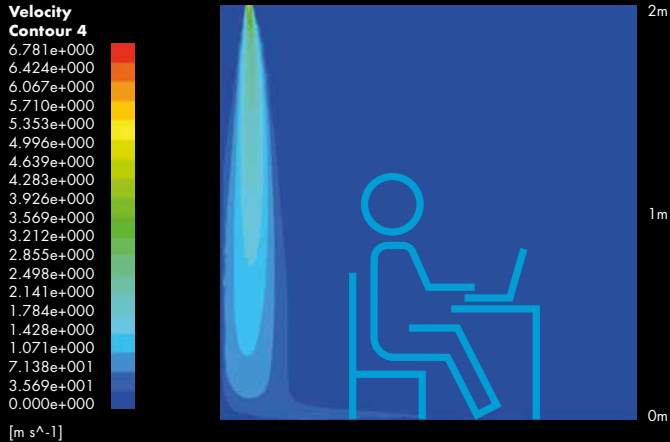


Invisible.AC installation including our designed and manufactured 25mm slots – Cedar Suite, The Grove – Luxury Hotel and Spa, Chandler's Cross, Hertfordshire UK

invisible.ac  
air jet comfort

the fully engineered  
air conditioning solution

No air turbulence in the conditioned space



Uniquely Comfortable

- Even temperature with no air turbulence
- Quiet (as low as NR20)
- Responsive, instant climate control

Above: Invisible.AC – Air speed CFD Plot



Discreet Design

- Inconspicuous air-jet delivery
- 25mm linear slots or small round outlets
- An interior designers dream

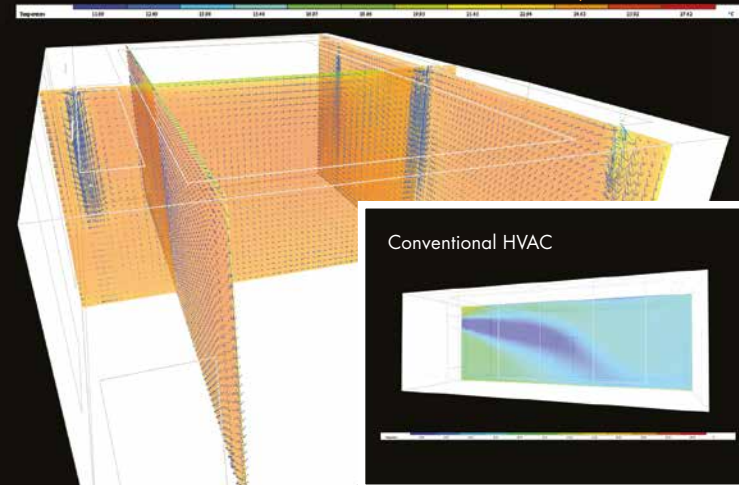
Left: Invisible.AC 25mm vertical ceiling slot (Residential use)

Right: Invisible.AC 25mm horizontal wall slot (Residential use)



No hot or cold spots in the conditioned space

24C consistent temperature



## Flexible Installation

- Space-saving mini-ducts (fits 150mm ceiling void)
- Touch sensitive room controllers
- Ideal for new-build or heritage properties

Above: Invisble.AC ready-insulated mini-ducting (<100mm diameter)

Below: Invisble.AC touch sensitive room controller

Above: Invisble.AC 25mm Horizontal wall slot – Runnymede on Thames Hotel, Windsor UK (Invisble.AC – Xythermal technology in Bedroom/s)  
Below: Invisble.AC discreet ceiling outlet with directional nozzle



## Efficient and Energy Saving

- Single system for cooling, heating and fresh air
- Heat pump compatible (works with DX and CW systems)
- Full system zoning

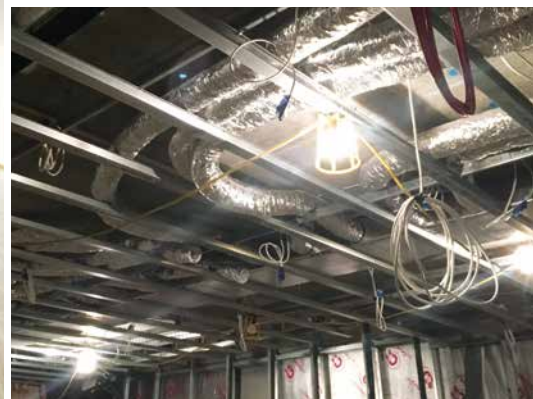
Above: Invisble.AC room-air stratification CFD plot – improved comfort with 6 x air jets at 7m/sec.  
Below right: Conventional HVAC.



Invisible.AC installation – Committee Room,  
The Jockey Club HQ, Newmarket, Suffolk UK



Invisible.AC discreet 25mm wide linear ceiling  
slot and room controller.



Above: Invisible.AC 25mm vertical ceiling slot  
Below: Invisible.AC in-progress installation, requiring only 135mm ceiling void

Distributed by

**Invisible.AC Oceania**

**T** +64 98898312

**E** [oceaniasales@invisible.ac](mailto:oceaniasales@invisible.ac)

**W** [www.invisible.ac/australia](http://www.invisible.ac/australia)

Controls in partnership with



Compliance



Compliant CE Design  
and Manufacture

Powered by



**ZIEHL-ABEGG** 

Interfaces with



**MITSUBISHI**  
HEAVY INDUSTRIES, LTD.  
Our Technologies. Your Tomorrow